

**FOR LEASE**

## For Lease

**Rental Rate: \$20.00/SF MG**

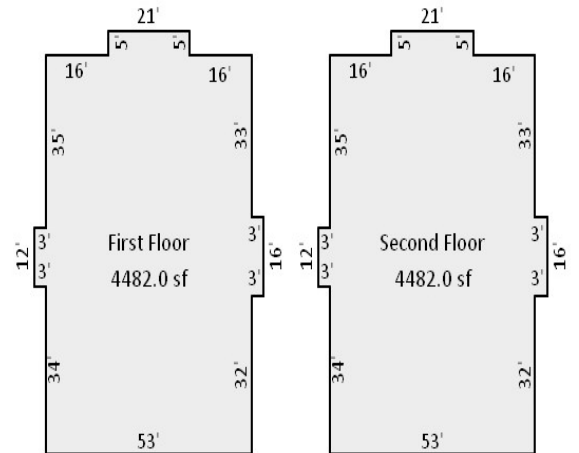
### Property Highlights

- Total Building Size: +/- 8,964 SF
  - » First Floor: +/- 4,482 SF
  - » Second Floor: +/- 4,482 SF
- Great South Tulsa Location
- High End Finishes
- Very Well Maintained
- Efficient HVAC with air purifier



### Area Amenities

- Security Card Access and Security Cameras
- Abundant Parking
- High efficiency HVAC with air purifier
- Close Access to Creek Turnpike
- Locally Owned and Managed



For more information, please contact:

Jared Andresen, SIOR  
President  
+1 918 359 3522  
[jandresen@commercialoklahoma.com](mailto:jandresen@commercialoklahoma.com)

Brett Beaver  
Director  
+1 918 488 8418  
[bbeaver@commercialoklahoma.com](mailto:bbeaver@commercialoklahoma.com)

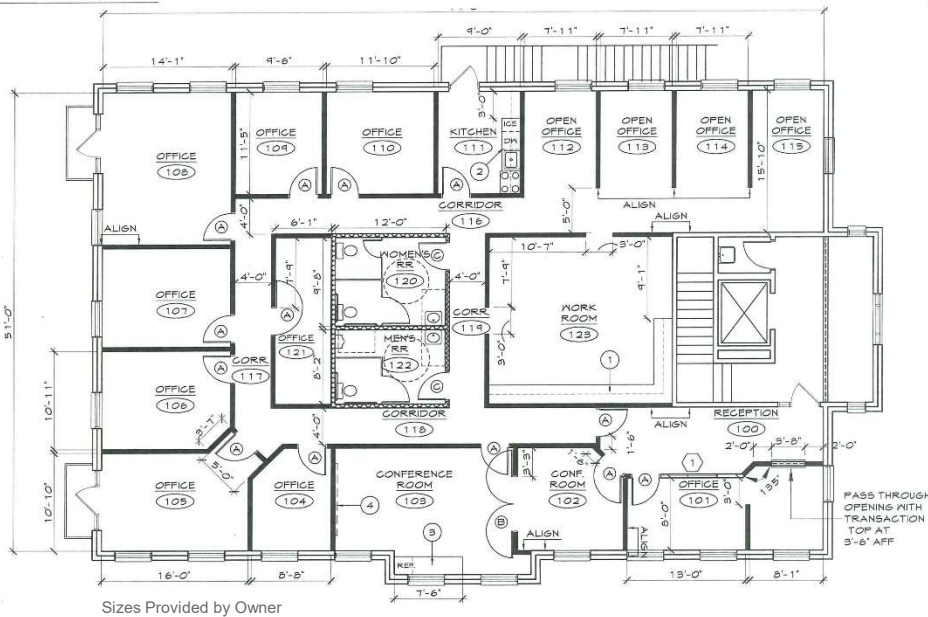
McKinzey Wedel  
Associate  
+1 918 359 3520  
[mwedel@commercialoklahoma.com](mailto:mwedel@commercialoklahoma.com)

4111 S Darlington Ave, Suite 1190  
Tulsa, Oklahoma 74135  
phone: +1 918 359 3520  
[www.CommercialOklahoma.com](http://www.CommercialOklahoma.com)



## Property Overview

This office building is located the South Tulsa Market and is a part of the Southern Woods Office Park addition. Surrounding this office park are restaurants, shopping, and the Whole Foods grocery store. This location also provides close access to Creek Turnpike



For more information, please contact:

Jared Andresen, SIOR  
President

+1 918 359 3522

[jandresen@commercialoklahoma.com](mailto:jandresen@commercialoklahoma.com)

Brett Beaver  
Director

+1 918 488 8418

[bbeaver@commercialoklahoma.com](mailto:bbeaver@commercialoklahoma.com)

McKinzey Wedel  
Associate

+1 918 359 3520

[mwedel@commercialoklahoma.com](mailto:mwedel@commercialoklahoma.com)

4111 S Darlington Ave, Suite 1190  
Tulsa, Oklahoma 74135  
phone: +1 918 359 3520  
[www.CommercialOklahoma.com](http://www.CommercialOklahoma.com)